



Burntwood Close, Billericay, CM12 9HE

£1,095,000

MARY BUGG POWERED BY **exp** UK

@ mary.bugg@exp.uk.com

marybugg.exp.uk.com

01245 94 84 84

Burntwood Close, Billericay, CM12 9HE

Located within a mile of Billericay Train Station is this substantial family home with just under 3000sqft of living accommodation and a large rear garden an internal viewing is highly recommended.

Quote reference MB0473





Located within a mile of Billericay mainline railway station is this large family home with just under 3000sqft of living accommodation, with three reception rooms, a double garage, seven bedrooms, five en-suites and a family bathroom an internal viewing is highly recommended.

Entrance Hall

Doors leading to lounge, downstairs w/c and open planned kitchen/diner, wood style flooring, radiator.

Downstairs W/C

Low level w/c pedestal sink unit wood style flooring, part tiled walls, wood style flooring.





Kitchen

4.37m x 3.58m (14'4" x 11'9")

Double glazed window to rear aspect, a range of wall and base mounted units with roller edge work surface inset gas hob with extractor over, stainless steel sink unit with mixer tap, double oven, space for fridge freezer, and dishwasher, wood style flooring, double opening doors to conservatory.

Dining Room

3.58m x 2.64m (11'9" x 8'8")

Opening to conservatory and kitchen, wood style flooring, radiator.

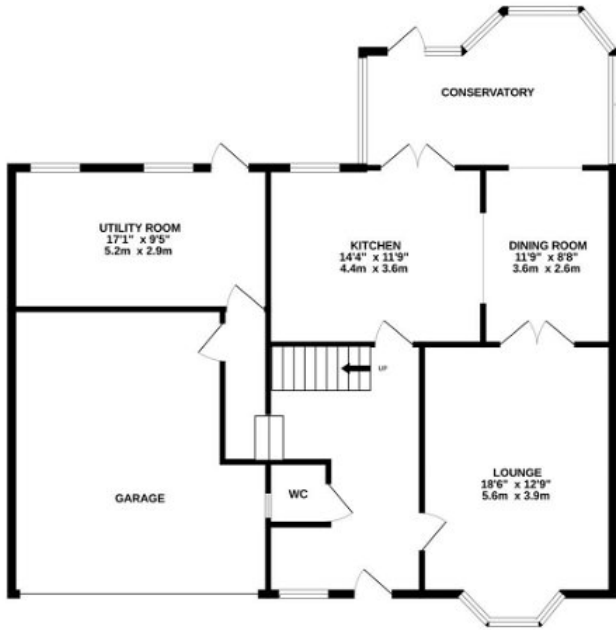
Lounge

3.89m x 5.05m (12'9" x 16'7")

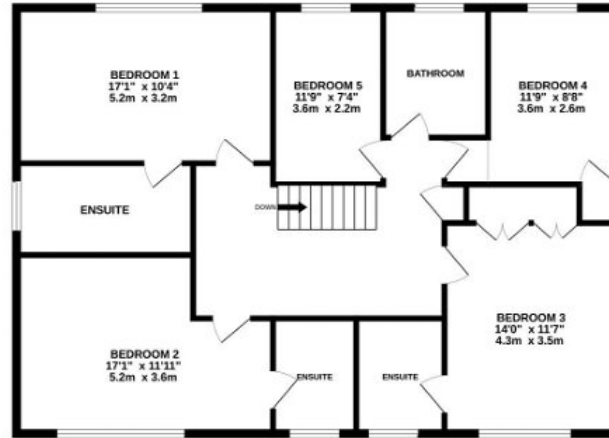
Double glazed bay window to front aspect, electric fireplace, carpet, radiator, double opening doors leading to dining room,



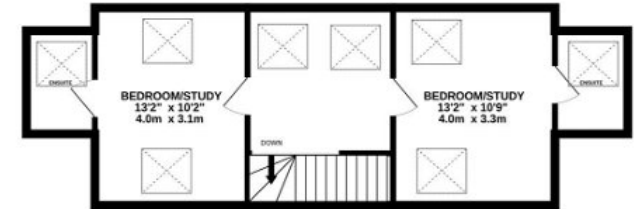
GROUND FLOOR
1296 sq.ft. (120.4 sq.m.) approx.



1ST FLOOR
1137 sq.ft. (105.6 sq.m.) approx.



2ND FLOOR
468 sq.ft. (43.4 sq.m.) approx.



TOTAL FLOOR AREA : 2900 sq.ft. (269.4 sq.m.) approx.

Whilst every attempt has been made to ensure the accuracy of the floorplan contained here, measurements of doors, windows, rooms and any other items are approximate and no responsibility is taken for any error, omission or mis-statement. This plan is for illustrative purposes only and should be used as such by any prospective purchaser. The services, systems and appliances shown have not been tested and no guarantee as to their operability or efficiency can be given.
Made with Metropix ©2024